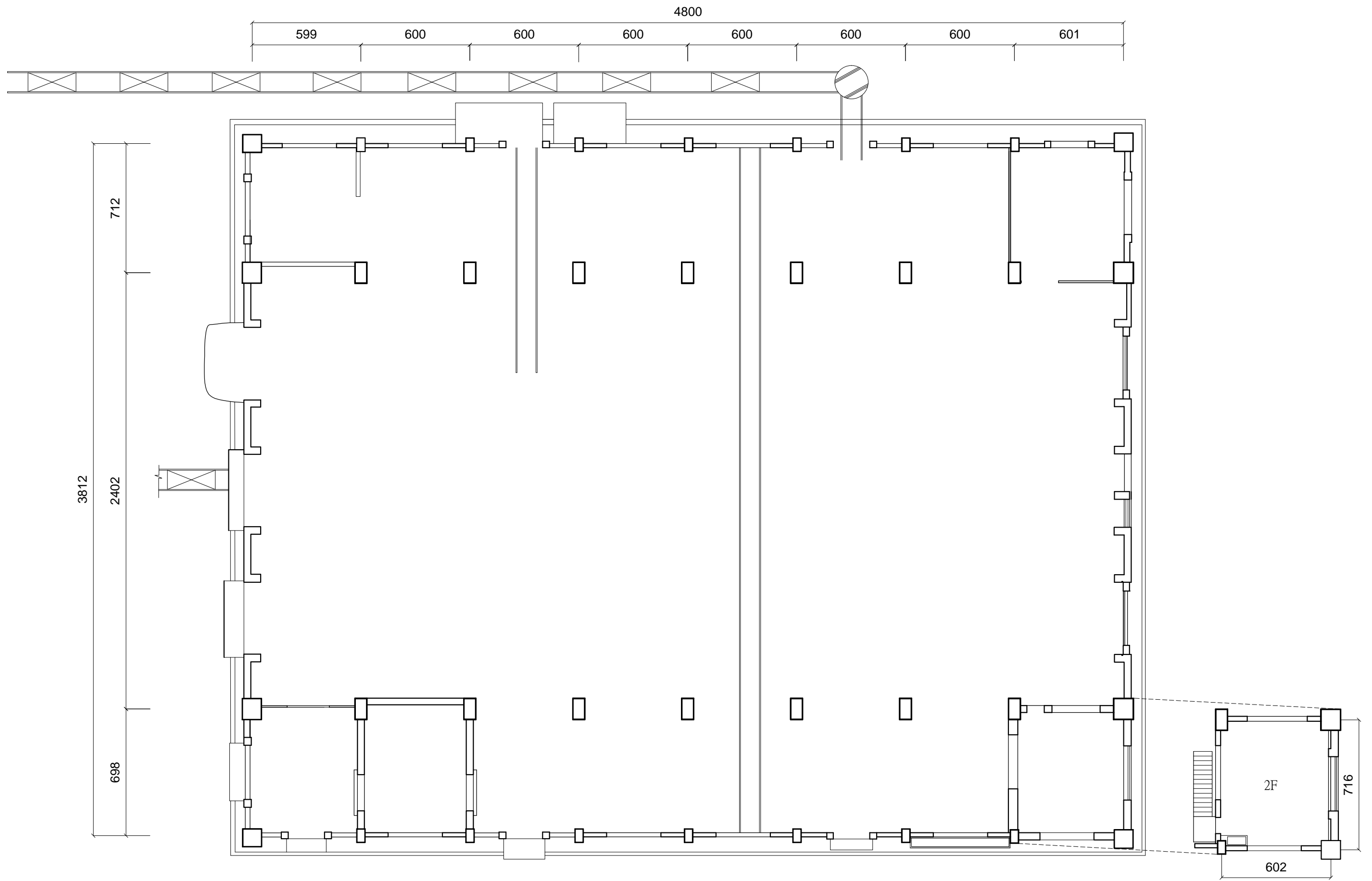


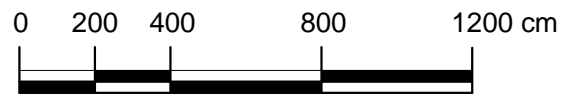
鑄鋼工場配置圖

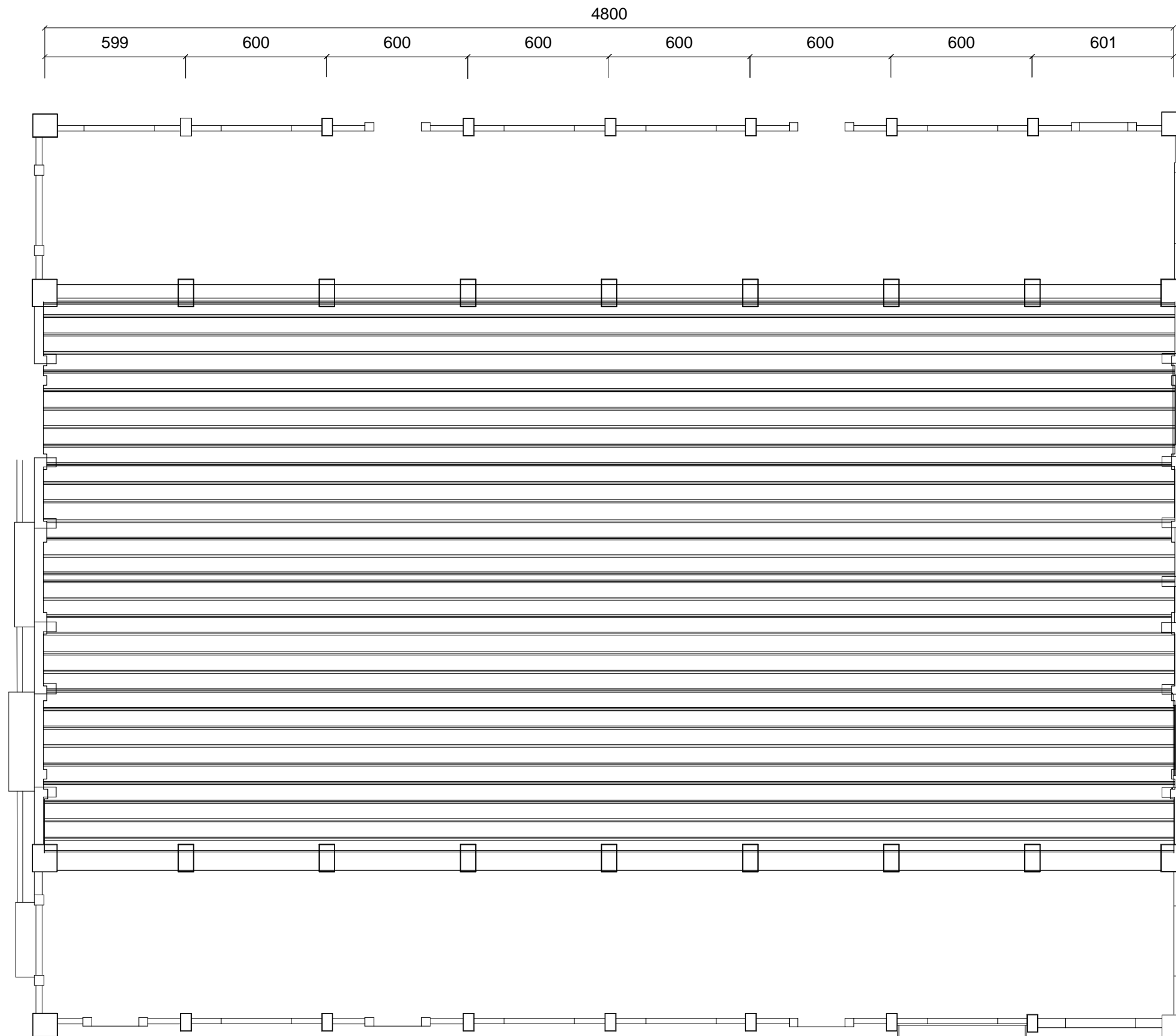
0 500 1000 2000 3000 cm



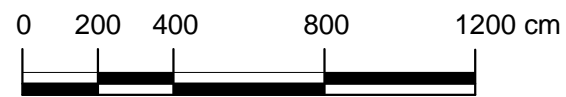


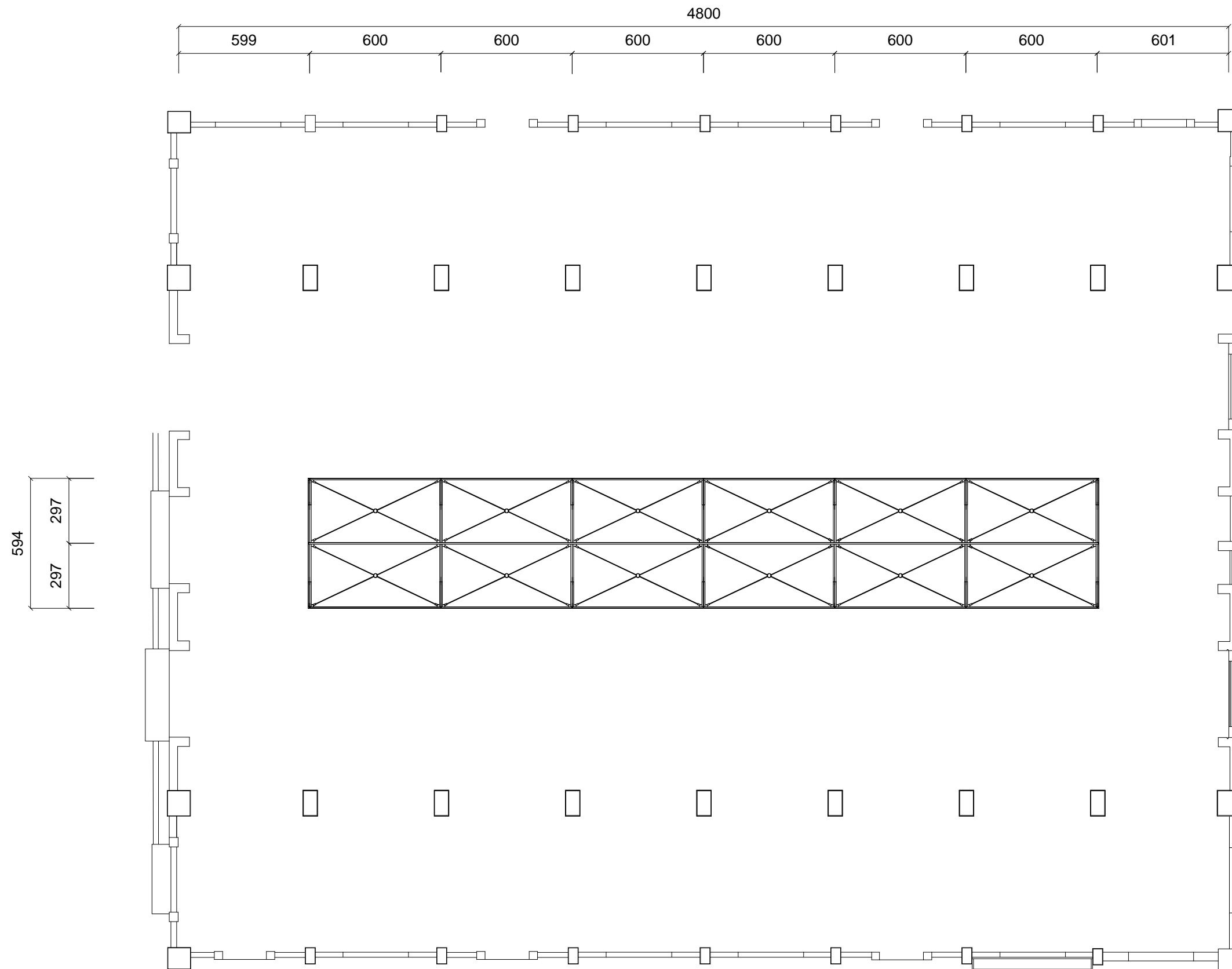
鑄鋼工場平面圖



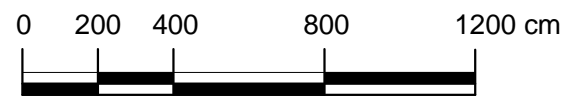


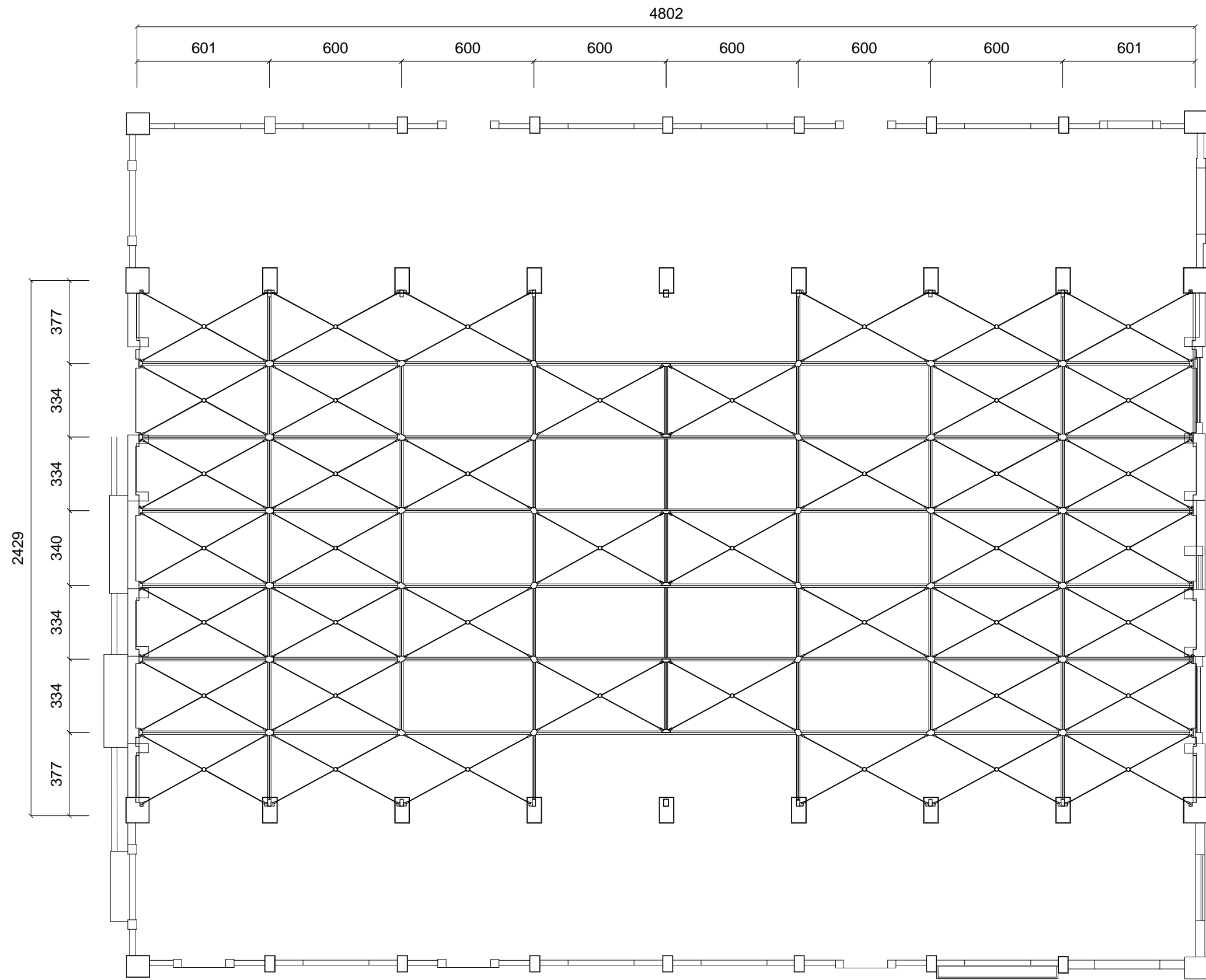
鑄鋼工場屋架反射圖(上層)



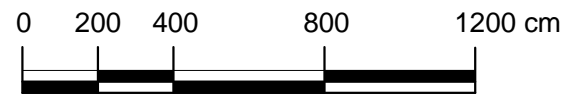


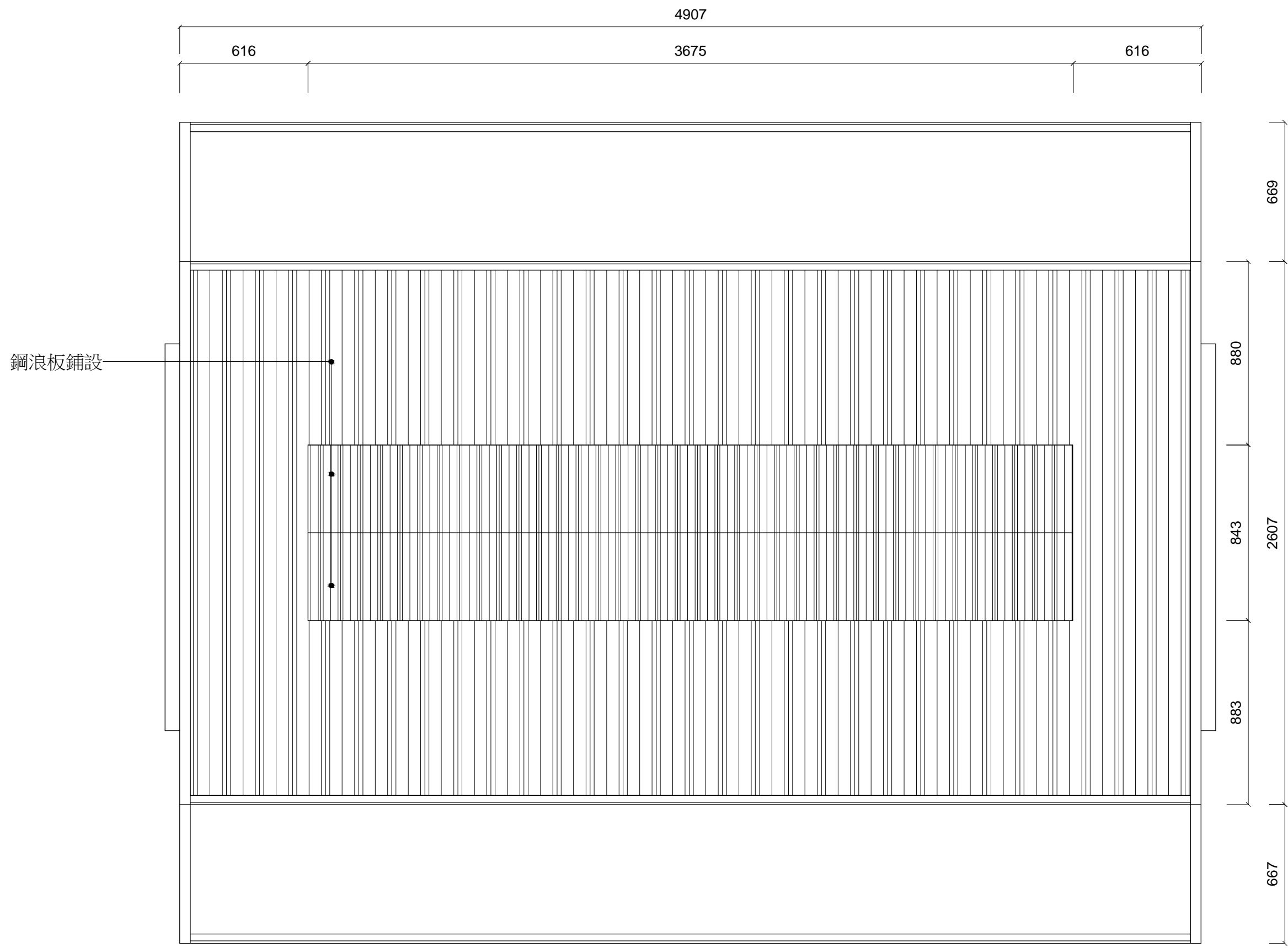
鑄鋼工場屋架反射圖(中層)



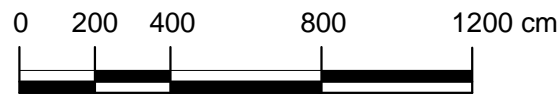


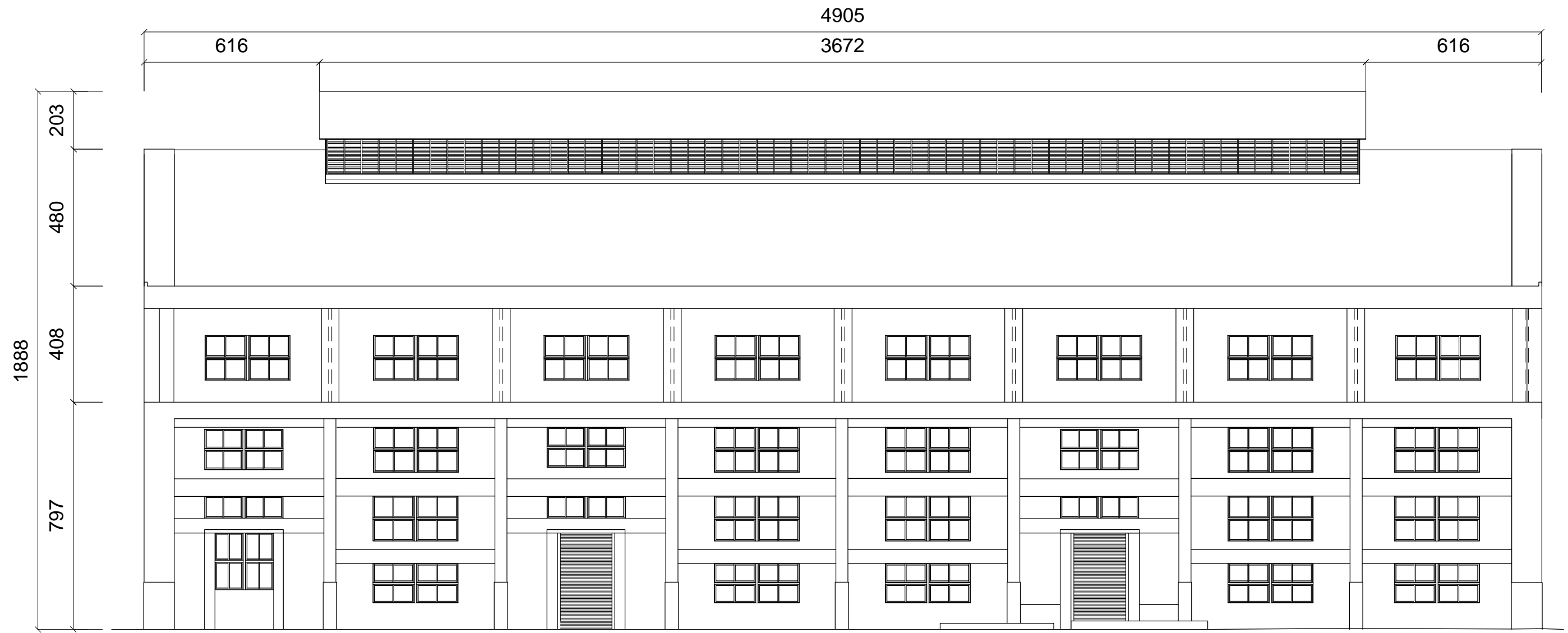
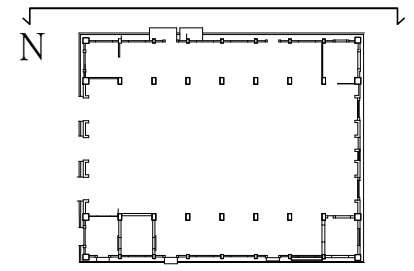
鑄鋼工場屋架反射圖(底層)





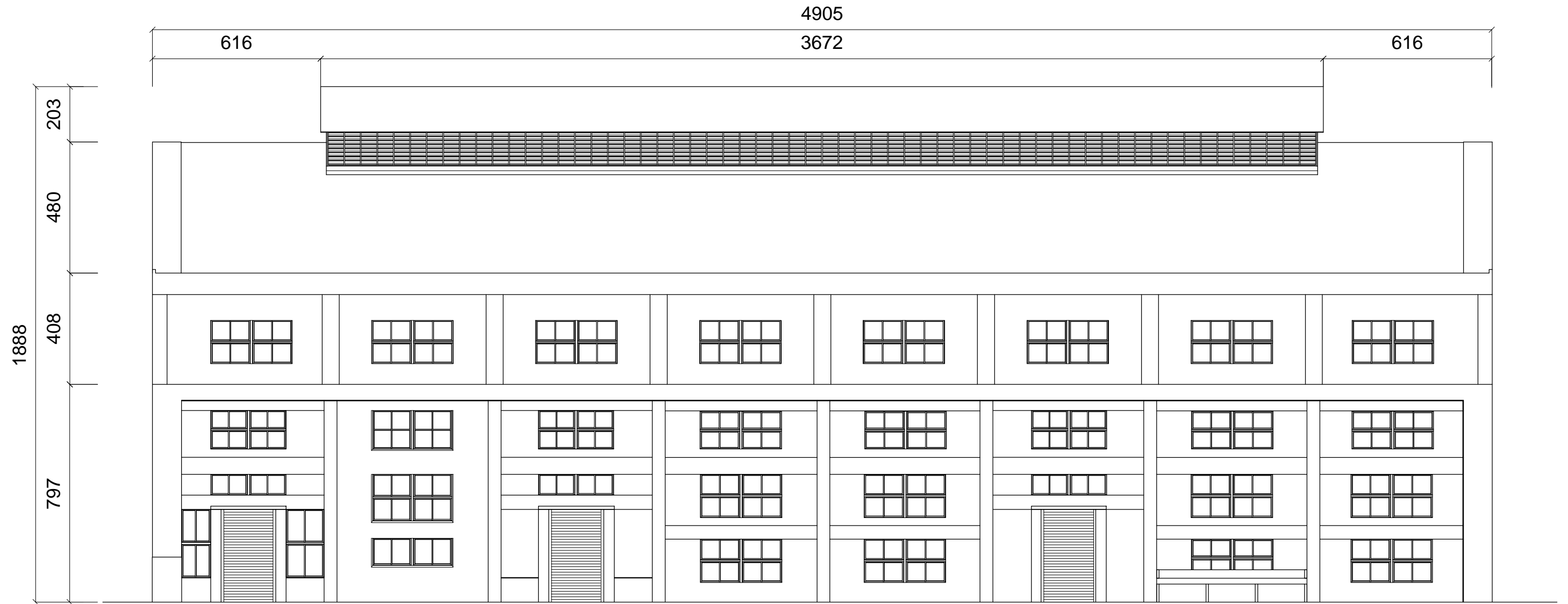
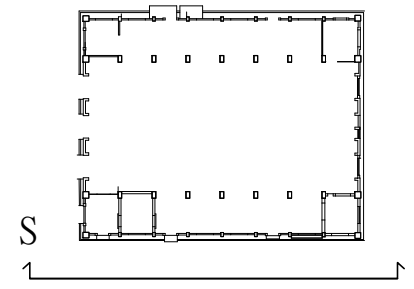
鑄鋼工場屋頂平面圖



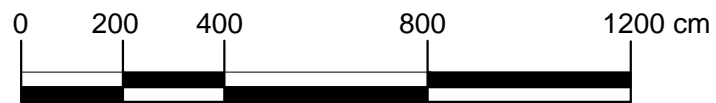


鑄鋼工場北向立面圖

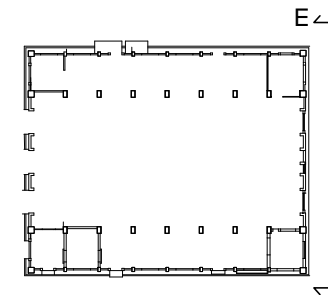




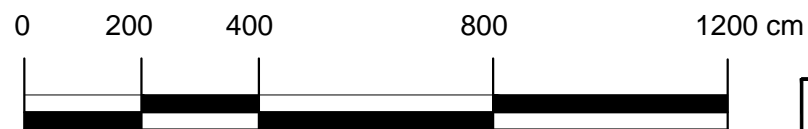
鑄鋼工場南向立面圖

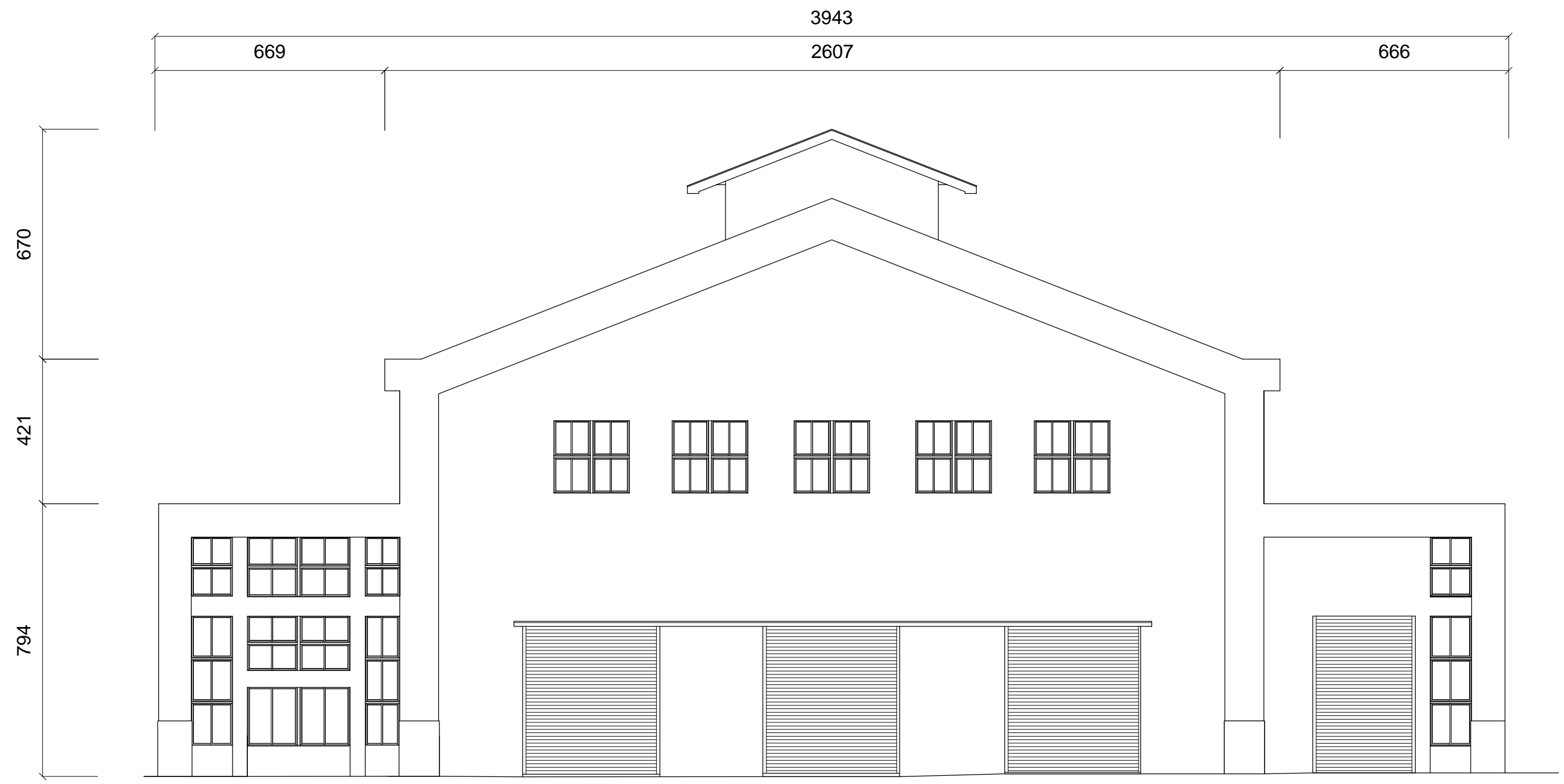
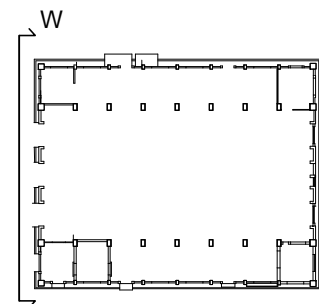






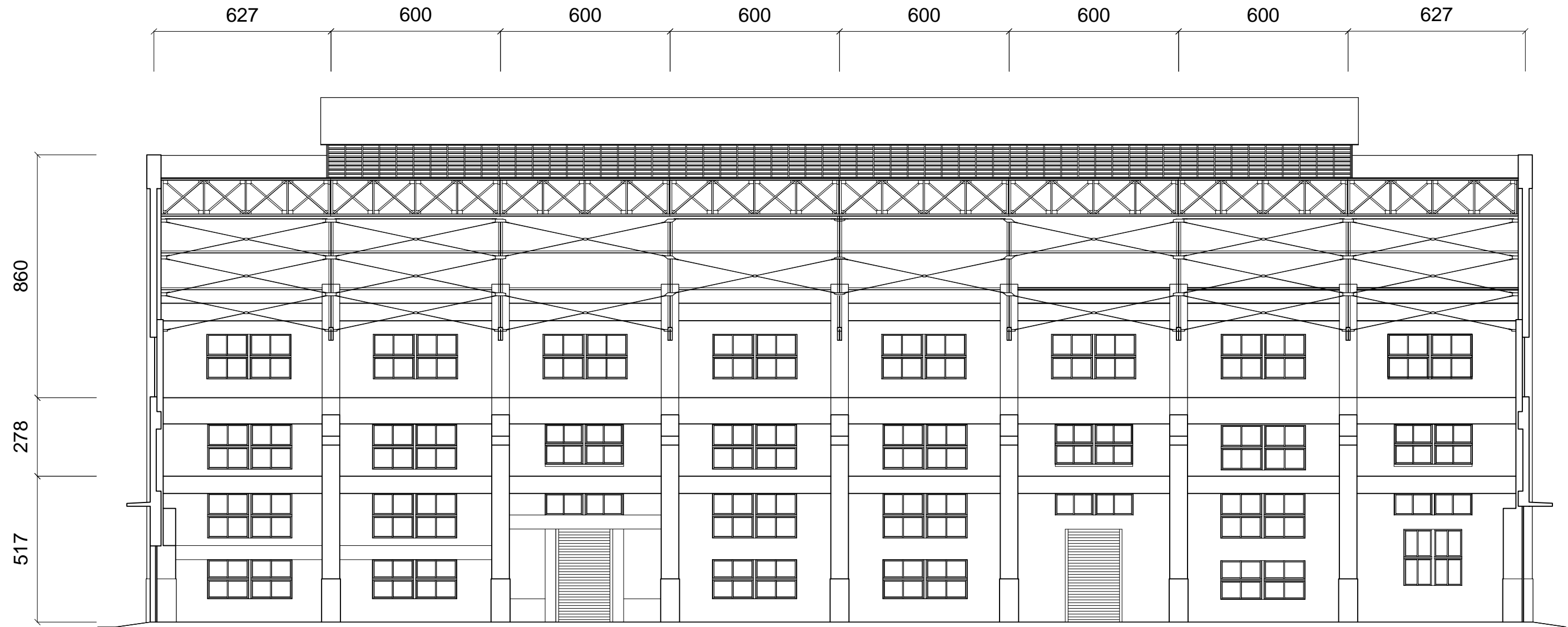
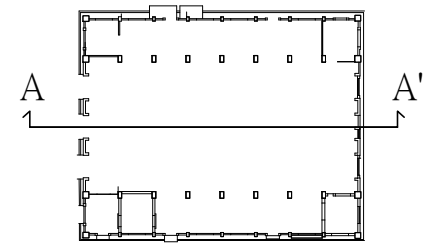
鑄鋼工場東向立面圖



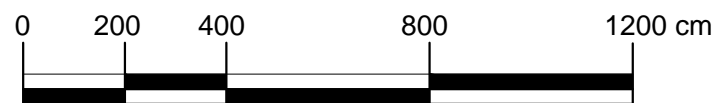


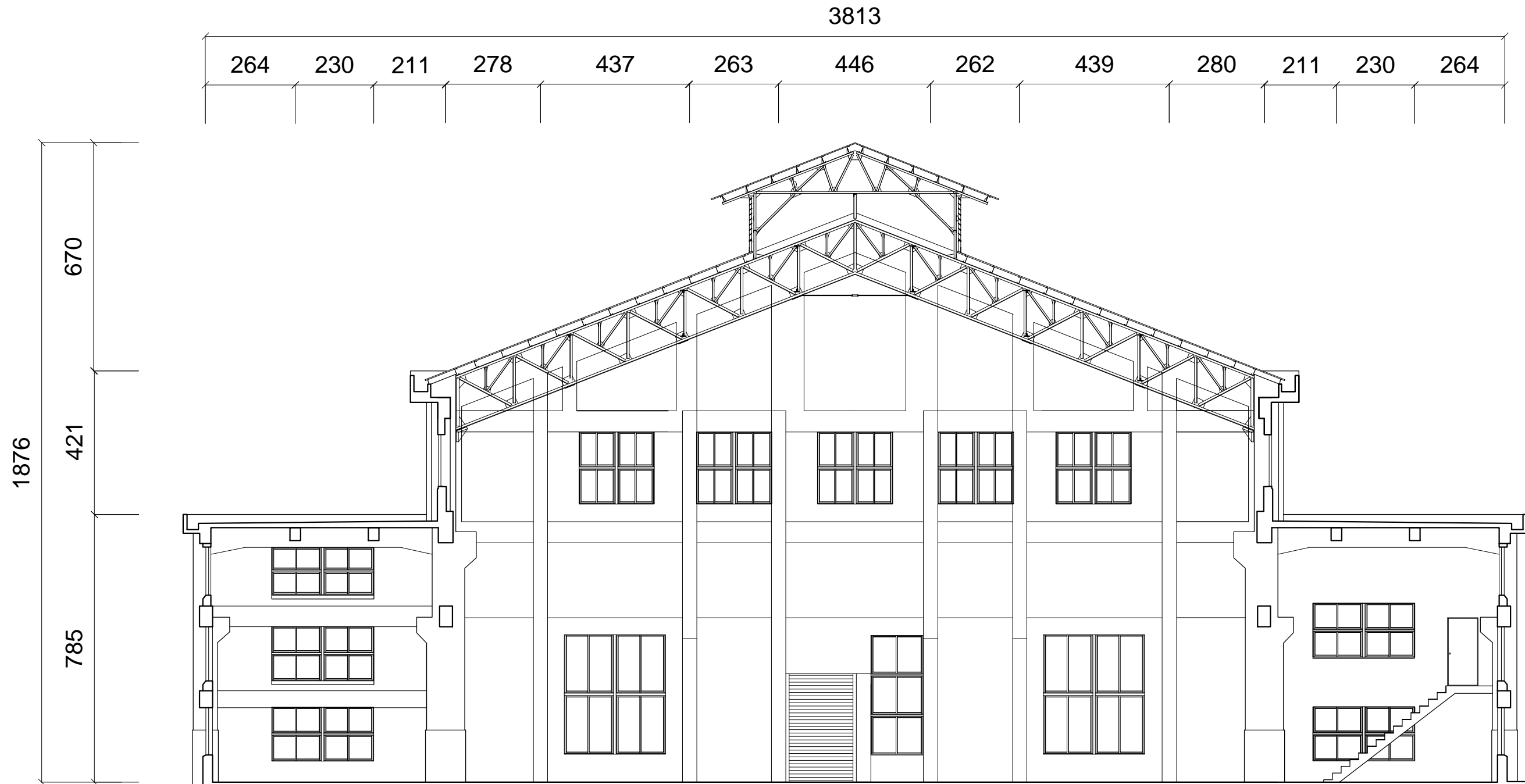
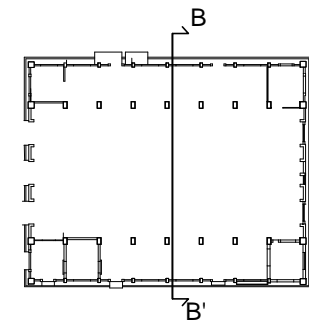
鑄鋼工場西向立面圖



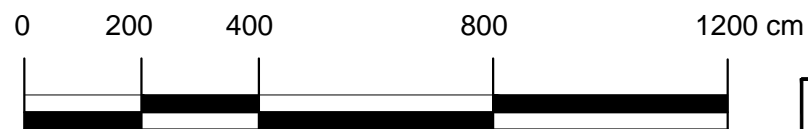


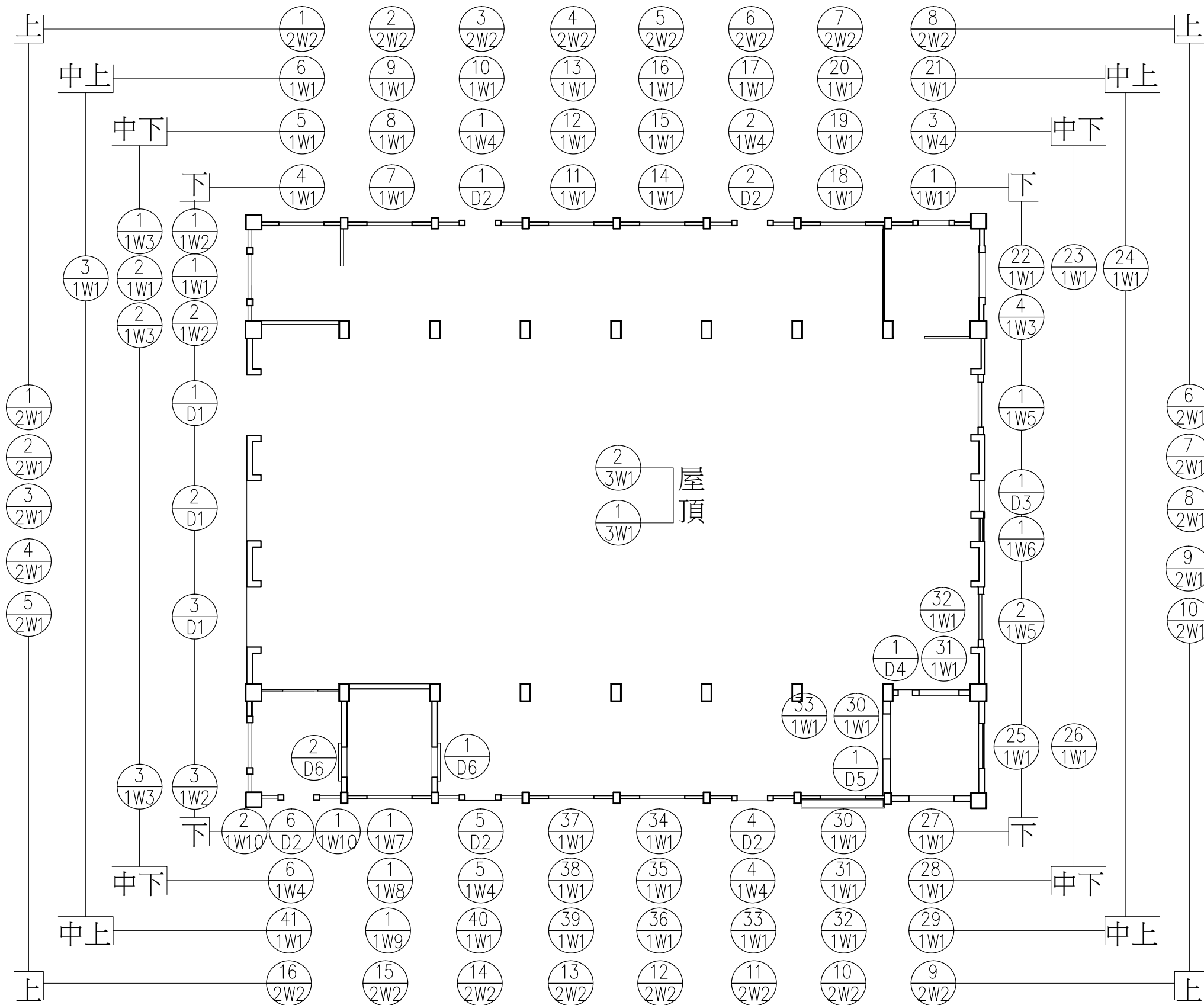
鑄鋼工場A-A'剖面圖





鑄鋼工場B-B'剖面圖





鑄鋼工場門窗編碼圖

0 300 600 1200 1800 cm

